

# **ROPE PARISH COUNCIL BULLETIN**

**MAY 2002**

# ROPE (CIVIL) PARISH COUNCIL

Dates of proposed meetings of the Council for the year 2002:

Monday 21 <sup>st</sup> January	Monday 15 <sup>th</sup> July
Monday 18 <sup>th</sup> March	Monday 16 <sup>th</sup> September
Monday 20 <sup>th</sup> May (A.G.M. & Ord. Meeting)	Monday 18 <sup>th</sup> November

Meetings take place at the Shavington Sports Centre on Rope Lane at 7.00 pm . They are advertised on the parish notice boards on Fuller Drive, Laidon Avenue and Rope Lane. **These are public meetings and the parish residents are very welcome.**

## Parish Council Members

Name	Function	Reelection date	Address	Tel.
Mr. M. Klafkowski	Chairman	April 2003	24 Bankfield Av.	662736
Mr. C. J. Cooke*	Footpath Office	April 2003	2 Bankfield Av.	569676
Mrs. B.Cooke		April 2003	2 Bankfield Av.	569676
Mrs. G. Lindop		April 2003	8 Rope Bank Av.	568273
Mrs. F.J.C. Pownall*	Tree Warden	April 2003	12 Crestwood Cl.	664540
Mrs. C. Speed JP		April 2003	1 Pinewood Court	662855
Mr. J. Foster	Parish Clerk	xxxxxxx	Chapel Cottage Bluestone Acton	629075

\*Trustee : Parish Council of Rope Charity

The School Governor to Berkeley School appointed by the Parish Council is Mrs. D. Mitchell-Grimsditch.

The Parish of Rope is represented by two Borough Councillors:

Cllr. Mrs Margaret Simon  
7 Glaisdale Close  
Wistaston  
Crewe  
CW2 6SF

Cllr. Michael Kinsey  
314 Crewe Road  
Wistaston  
Crewe  
CW5 6NN

Tel. 01270 663110  
Fax 01270 651582  
e-mail  
cllr.margaret.simon@  
crewe-nantwich.gov.uk

Tel. 01270 664110  
Fax 01270 652329  
e-mail  
cllr.michael.kinsey@  
crewe-nantwich.gov.uk

Both Ward Councillors are always available to you for advice and to listen to your concerns.

## PARISH COUNCIL VACANCY

Just before going to print Parish Councillor A. Davies made the decision to resign from the Parish Council. We are very sorry to see him go. We will miss his input to the parish and his nineteen years of experience. Quoting from his letter of resignation "..... I consider it to be timely for my place to be taken by someone else, who will bring new ideas, new visions to the office ....."

He feels sure such a person exists in the parish.

## Community Spirit

We move into an area because we like it, we decorate our new house; we beautify the new gardens and then bask in their glory. Granted that the next step is different from the others but not all that different: It needs energy, it needs inspiration, it needs initiative and it needs time.

Undoubtedly we are all part of some community: Church members, parents of school children, new parents, dog walkers etc... In each of these communities we perform some functions or actions which bind us together.

However we also live in a country, which has a political structure, envied by the rest of the world. It is not a new structure; it has grown over many years and is not simple and it is changing (see other part of bulletin).

One of the basic building blocks of this structure is the parish. It grew from

estates, manors, and villages. Nearly everyone knew everyone else; there generally was a church, a pub, rules, festivals, and leaders. All this was possible in a society which had relatively little movement.

The population on the lands of this parish has continued to grow. Here are some figures from the census:

**Year 1971: population 863**

**Year 1981: population 1217**

**Year 1991: population 2130**

**Year 1999: population 2180**

Such growth has its problems. The number of parish councillors allotted to the council has not changed with the growth of population. Very few new people have volunteered to serve as councillors. All the present parish councillors are due for re-election in April 2003.

This parish has no central focus but within its boundaries we have two schools

and a sports centre but these have not helped in the formation of a community spirit. We live in a distinct area with a definite history (see another part of bulletin). Its independence is threatened and previous councils have had to fight for it. Do we want to be some small part of a much larger unit or do we in this area want to be able to have our say in whatever small measure as to what happens around where we live?

### **It is up to you.**

So if you think like the present council please join us in helping to develop a parish community spirit.

Besides putting up for election as a parish councillor there are things you can do.

The parish council would appreciate help with the distribution of its publications. Look at the simplified road map further in this bulletin and see if you can help to deliver around your area. The parish councillors are delivering this bulletin

to 784 households.

There are three notice boards in our parish and they frequently have out-of-date notices on them. It would be nice if some people living near the boards kept them up to date.

There are three waterways crossing the parish. A water quality measuring kit is available if we have a volunteer to carry out measurements.

Help in the formation of a Rope Community Association. Such a body could publish its own newsletter and help in the running of parish events... Golden Jubilee street parties, tree planting etc.

Form a Rope Parish Website.

There must be many other things, search your imagination!

Money is available for community projects.

Such spirit exists in other parishes, **why not in Rope?**

## An outline of the working of the Parish Council

Parish councillors are public-spirited individuals who can spare the time to help represent other people living in an area. They are either elected or selected by being co-opted. They are unpaid with only some of their expenses covered. The only paid member on the parish council is the parish clerk.

The parish council has the powers to plan some of the expenditure for the parish and to set a precept. The parish council can also allot monies from the parish budget to causes which it considers worthy and or useful to the people living in the parish.

The borough carries out a number of functions in the parish: roads, litter, tree trimming, grass cutting, dog litter bins, and road signs, are some of them. The parish council works with the borough helping to monitor this work. The bor-

ough also passes on planning applications in the parish of Rope to the parish council for their comments.

Rope is in the borough ward of Wells Green and the two borough councillors are Margaret Simon and Michael Kinsey, who regularly attend parish council meetings.

The parish council has also contacts to the county council. Rope is in the county division of Rope and the county councillor is Robert Parker. The county council carries out the work on some of the roads and road verges. The county council also acts as our contact for some grants.

The parish council also interacts with the police and the county council educational department. One of the Berkeley School Governors is appointed by the parish council.

Lots of documents arrive from the borough, county

and government and the parish council is expected to make responses which reflect the views of the people living in the parish.

The present government has put forward proposals to increase the participation of the public in the running of parishes.

## A brief guide to the Government Proposals

These proposals were outlined in the Rural White Paper published November 2000. In addition to proposing a closer working relationship of Local Authorities and Parish Councils a key concept from this paper pertaining to parish councils is 'Quality Status'. The conditions for Quality Parish are now under discussion prior to implementation later this year. In brief outline these are:

- A parish would have to apply to be assessed for Quality Status every four years. The cost to be covered by the parish.
- All the parish councillors to be elected.
- A minimum of six parish council meetings per year.

- The parish clerk to be competent.
- An annual report to be published.
- A quarterly newsletter to go to every household.
- Accounts to be audited by an appointed body.

One object of these proposals is a closer input of the community to the running of the parish.

### Ethical code of conduct

As from May this year parish councils in England have to adopt a new code of conduct. It will involve each councillor giving a written list of his or her interests. These lists will then held by the parish clerk and will be available for inspection by the public.

## From the Tree Warden

Many of you will be aware that quite a few trees had to be cut down to allow road widening operations to take place in Rope Lane near the High School.

Parish Councillors and the Parish Clerk held discussions with the Highways Agency, the Borough Council Engineer and Borough Councillors. It was agreed that there would be an additional replanting scheme put into effect on completion of the work in this area when a suitable site could be found for the trees.

The overall scheme for the new by-pass has planting built in to it but because of the semi-rural nature of the parish we felt that the loss of so many trees had to be redressed. Young trees cannot replace the loss of trees of one hundred years and more but as our predecessors planted for us, so must we plant for the future.

Help has been at hand for us in other ventures from the Landscape Trust. This is a

charitable trust that promotes landscape awareness and encourages community action to keep the natural appearance of the environment.

The Trust will donate trees and shrubs for us to collect and plant and we hope that we will improve the amenity of the parish.

### DUTCH ELM DISEASE

Since Dutch Elm Disease destroyed so many English Elms it has been found that some have survived in hedgerows and in isolated areas. These trees need careful attention as they can degenerate at about ten years of age and can benefit from coppicing.

As Tree Warden I am offering a prize for the first child to inform me of an elm or elm in a hedge in the parish. Children may get help from an adult to identify the species. Contact me, Fiona Pownall, at 12 Crestwood Close, Telephone 664540.

## SHAVINGTON LEISURE CENTRE

Rope Lane, Shavington, Crewe.

Tel: 01270 663221.

e-mail: [shavington@crewe-nantwich.gov.uk](mailto:shavington@crewe-nantwich.gov.uk)

If you're looking to tone up and get fit then The Planet Pulse Fitness Suite has two floors of cardiovascular and resistance equipment and offers great value for money (**Look out for the offer with the coupon below**).

There are various ways to pay with the Annual memberships proving the most popular all-inclusive package. The membership includes unlimited use of the fitness suite (and the suites at Crewe and Nantwich pools) free swimming, and free entry to all centre run fitness classes.

With prices starting at £21.00 (off peak), £28.50 (full membership) and £40.00 for couples there is no reason to delay – and don't forget there is no joining fee.

The Youth Fitness session takes place on Tuesdays and Thursdays from 4 – 5pm during school term time. This activity needs to be booked and is available, for year 9 pupils and above during school term time.

### SHAVINGTON LEISURE CENTRE FITNESS SUITE OFFER

**Book your Free induction (usually £6.65)**

**BOOK NOW!**

**Tel: 01270 663221 or call in at the centre**

**Offer valid until 31<sup>st</sup> May 2002  
on production of this coupon**

The new season is here and Shavington Leisure Centre is offering a wider range of activities than ever before – with something all ages.

If you are looking at general fitness then there's everything from circuit training to yoga, basically something to suit everyone. Why not call in and pick up the full programme.

The list goes on – with drama and dance classes, tae kwon do, slimming classes and the popular bookable sports such as badminton, squash and table tennis.

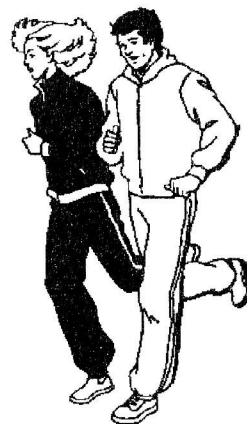
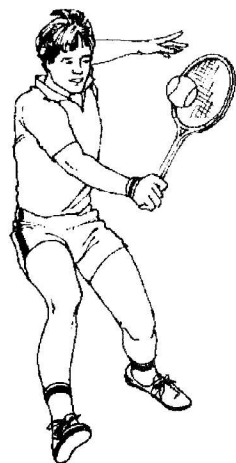
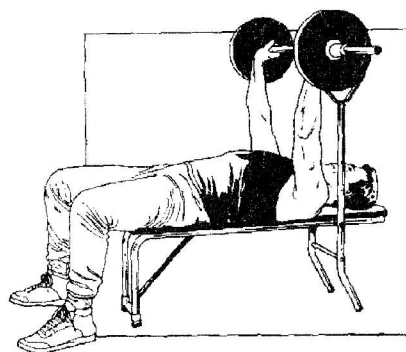
The Tennis season is fast approaching and with four courts available (and equipment available to hire), we cater for all levels. Look out for Tennis Coaching sessions after Easter.

Indoor Short Tennis takes place for youngsters on Sunday mornings for those who want to improve their skills with qualified tuition.

The centre offers a great package for Children's parties with hire of half the sports hall (equipment provided) and a

room for your refreshments all included for just £23.10.

On the social side don't forget the Bar/Function Suite which is available to hire **free of charge** to groups of 50 people or over – so if there's any celebrating to be done why not do it at your local leisure centre!



## Some facts about the Parish of Rope

The parish of Rope covers an area of 471 acres. About 40%, mainly in the north-eastern corner of the parish, has been built upon. There are about 780 households. There are thirty-seven named roads (see further). The area is quite well wooded with at least thirty preservation orders on some of the older trees. It has two wooded and night-lit linear walks. This autumn 450 crocus bulbs were planted along each walk. The bulbs were a donation from the Upper Weaver Initiative but not the hard work of planting. Despite the presence of dog-litter bins and anti fouling notices the grass along these walks is still badly contaminated. We will see how the crocuses fare in spring. Look out for them, as well as the daffodils planted in previous years along other grass verges.

There are three PLAY AREAS in the parish. These are for the benefit of our

energetic younger generation and not just green open spaces.

The Berkeley Primary School and the High School have also benefited from a bulb donation from the same source. Enjoy the spring flower display.

The Crewe-Chester railway line and Rope Lane separate the built-up area from the other 60% of the parish. The farmland here is divided among the four farms in that area and one not resident in Rope. In this area are also the High School (called Shavington although it lies in Rope) and the Sports Centre which Rope Parish Council uses for its meetings. Now there will also be a four-lane by-pass.

There are a number of ponds, all in private ownership. Three streams cross the parish. Swill Brook is the only one named on modern maps. The one east of Swill Brook was named Roope Sike on an old map which is now



lost. Roope Sike runs along one of the linear walks. The stream west of Swill Brook, which flows through fields and near to Rope Hall, appears never to have had a name.

There are three footpaths

in the parish.

To leave the parish by road you go into the parish of Wistaston by five roads, into the parish of Shavington-cum-Gresty by three and into the parish of Willaston by one.

## Outline history of Rope parish

- 1290 Lands held by Philippa Basset
- 1303 Richard De Roope marries Cecily Wodenot and acquires lands. Name change to De Rope in next generation.
- 1709 John Wright bequests £ 10 to Church Wardens (Wybunbury). Interest to be distributed to the poor of the township of Rope on St.Thomas' Day (Dec. 21)
- 1870 Rope in Wybunbury Parish
- 1871 Population 84
- 1872 Rope becomes a Civil Parish

## Parish Footpaths

Two of Rope's public footpaths are closed due to work on the A500 by-pass and will be subject to diversions when they re-open.

That running from Eastern Road, near to Rope Hall to Main Road, Shavington, near Puseydale Farm will have its

line diverted slightly to cross the new road using a new bridge provided for farm traffic.

The other, coming from Main Road, Shavington will emerge onto Rope Lane near Burley Drive to avoid crossing the by-pass.

## Shavington High School

There has been a secondary school on the site of the present school since 1958. Shavington Secondary Modern was opened by Wing Commander Grant Ferris on 31st October in the presence of local dignitaries and the then Chairman of Governors Mr Jackson.

Initially, the school catered for 200-300 pupils and served the immediate area, which at that time included Willaston. The first Headteacher was Mr H.F. Williams who remained in charge until 1977, when he retired. This was an important time for the school as Cheshire County Council was reorganising secondary education, with the formation of 11-16 mixed comprehensive schools in Crewe and Nantwich and a sixth form centre at Malbank. The new Headteacher was Mr P.R. Williams, who opened the new Shavington High School in September of that year. By this time, there were over 1100 pupils on roll.

Buildings had been

extended with the raising of the school leaving age in 1972 and again when the school became Comprehensive. Also, the opening of the Shavington Leisure Centre had an important impact on the site as it provided for extended community use in the evening and at weekends.

Since 1977, the world of education has changed dramatically. The 1988 Reform Act, National Curriculum and Local Management of Schools have transformed the day-to-day work of schools. There are tests at the end of Year 9 for all (the old third year) and a national system of examination at 16 with GCSEs. The school is now funded directly by the Local Education Authority. In 1990 for example, the school budget was £65,000 – it is now £2,500,000! The school employs 56 members of the teaching staff and 34 support staff and has 965 pupils on roll. In the future, we intend to apply for Specialist College Status in Science.

There have only been three Headteachers at Shavington and I am the first not to be called Williams! Being a Head is a real privilege and the daily challenge for all in education is to help each and every pupil to do his or her very best. Our intention with our pupils at Shavington is for them to Aim High and Be Successful in all they do.

Pupils are offered a wide range of opportunities to develop their individual talents through musical and sporting involvement. In addition, they can visit

France, Germany, go skiing in the Alps, attend a PGL Activity Holiday and in Year 10 (fourth year) visit the battlefields of Belgium and France. Theatre, gallery and other educational experiences, such as a two week Work Placement further enrich the school.

Each year we hold an Open Evening and members of the local community in general and Rope, in particular, are very welcome to visit to meet staff and pupils and see the school in action.

**Robert Knight**  
**Headteacher**

---

## Berkeley Primary School

During the mid 1960s it became clear to the Local Education Authority that, as the result of local house building (and planned building) it was imperative that a new school should be provided for this area. At first the plan was to build two separate buildings: one for infants and one for juniors. This scheme was abandoned

and it was finally decided that a primary school for children in the age range 5-11 should be built.

The school was named Wistaston Berkeley County Primary School (it was thought it lay in Wistaston and was known to be fairly near to Berkeley Crescent, a long established group of houses off the Nantwich

Road). It suffered this misnomer for thirty years in spite of the fact that it lay in Rope and not in Wistaston. The change to The Berkeley Primary School was long overdue.

The school has had only two headmasters in its quite long history. In 1968 Mr John Williams was appointed as the school's first headmaster. January 1969 saw the opening of the new school with a small number of pupils using some of the eight classrooms available. Pupil numbers soon grew and all the classrooms were fully used.

Mr Williams retired in July 1991, having been Head for more than twenty-two years – an important, long and productive period. He shaped the school, created its philosophy and ethos; he inspired a loyal and devoted staff. The children of the area were, and still are, well served, given a splendid start in life.

In early 1991, Mr Michael Finnigan was appointed as Head and took over direction of the school in September. Mr Finnigan came to Berkeley with considerable

and diverse teaching experience for he had already been the headmaster of two other Cheshire schools.

The school has had only three deputy heads in thirty-two years: Mr John White, Mrs Joanne Buckley and the present deputy, Mr Mark Challinor.

By the early 1990s the number of children on roll had risen sharply owing to an explosion of house building in Rope, Wistaston and Shavington. The existing eight classrooms provided inadequate accommodation and the hall had to be used for teaching areas. To overcome the problem temporarily, three mobile classrooms were erected.

The number of pupils continued to increase and extra permanent classrooms were built. The staffroom has been extended and the inner courtyard has been roofed and provides an IT centre and more teaching space.

The number on roll has further increased and is expected to continue to grow. Now more accommodation is being planned to cope with



growing numbers of pupils.

Rope should be proud of its Berkeley School. It has proved itself during the past thirty-three years to be a centre of excellence, a lively and challenging school offering a splendid start for the area's children.

It is obvious that things work well at Berkeley. However, this would not be the case were it not for the tremendous support given by parents and the Governing Body and the superb efforts of the dedicated members of staff.

### **Latest from The Berkeley**

September saw further growth in the number of pupils attending our school. We now have 408 pupils on roll with 14 classes.

Many people will have seen the building works around the school over the past two years. We now have three new classrooms and a classroom which doubles as a computer room. Staff facilities have been enhanced with a staff room extension and

we have improved our disabled facilities with a disabled toilet and additional radio amplification system for the partially hearing pupils.

Recently, thanks to Rope Parish Council and The Cheshire Landscape Trust we were able to plant a number of trees and shrubs around the site to improve our environment and provide shade.

School life has continued to be vibrant with our excellent school orchestra and choir providing entertainment locally over the Christmas period. Our soccer team won the Autumn League in a thrilling match back in November.

Our commitment to professional development was recognised recently with the award of the prestigious "Investors in People".

The Berkeley remains a thriving and successful school committed to providing the best possible learning opportunities for its pupils in order that they can achieve their full potential.

**Michael Finnigan**  
**Headmaster**

## **PARISH COUNCIL OF ROPE CHARITY**

It might be wondered how it is that a parish council comes to have its own charity. It owes its origin to the time when Rope was part of the ecclesiastical parish of Wybunbury. Various bequests of land and money have been gathered together over time to form the Wybunbury United Charities which are administered by Mr Clem Bishop. An income is received from land rents and investments which is then distributed to various recipients including eighteen parish councils, of which Rope is one.

The Parish Council of Rope Charity is administered by two trustees. Its objective is to relieve distress caused by disadvantage, which in our present society is largely concerned with disability. While it must not provide a substitute for the support which is the proper responsibility of the state, it can help with those aspects of disability aids and adaptation, travelling expenses to hospitals etc, physiotherapy, special diet etc not covered by the state system.

The trustees are always pleased to receive any request for assistance and they urge anyone who is disadvantaged, or who is the parent of a disadvantaged child and who is having difficulty meeting the cost of easing that disadvantage, to contact them.

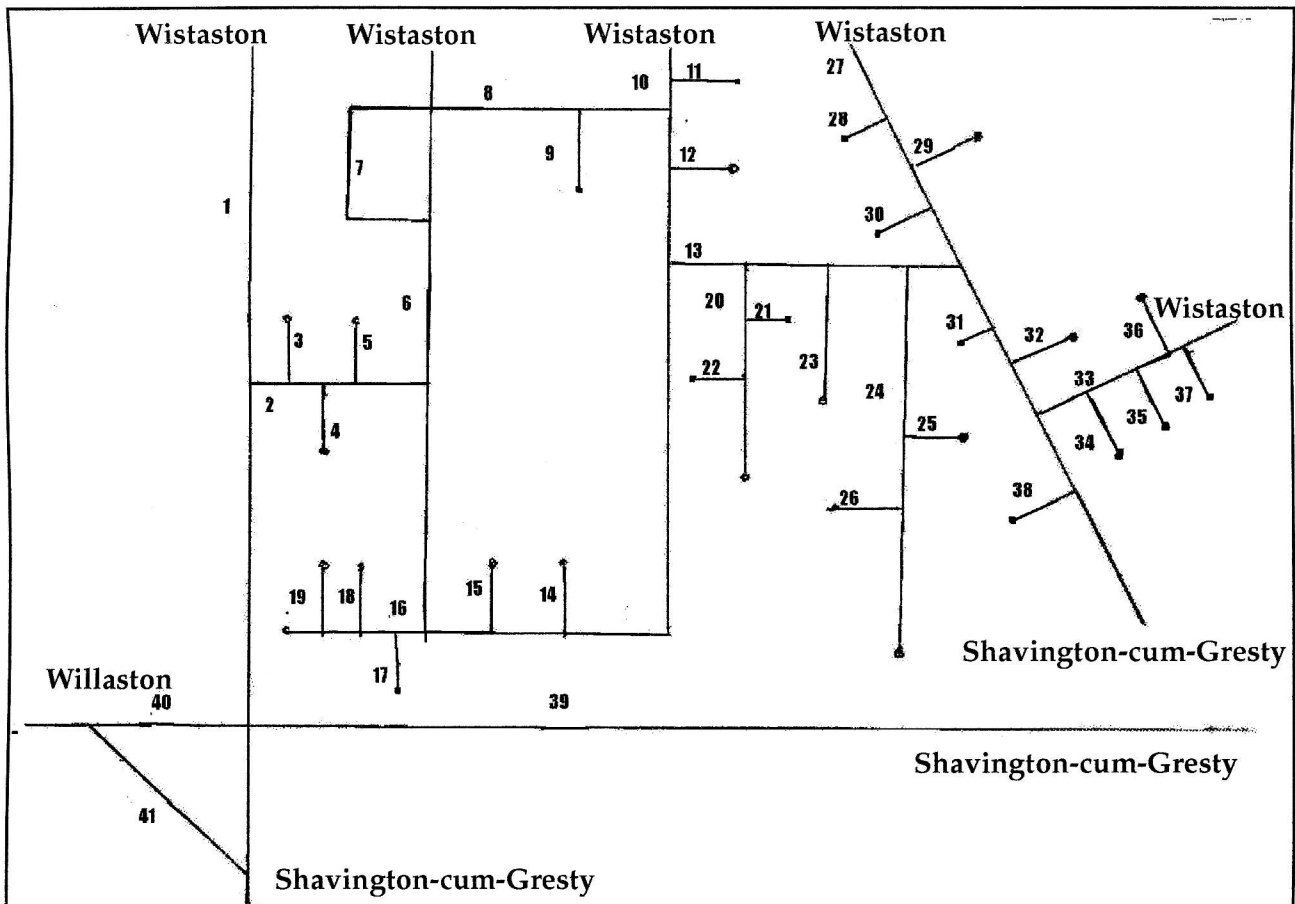
### **Parish Council of Rope Trustees:**

Fiona Pownall 664540  
John Cooke 569676

# Map of Rope

- 1 Rope Lane
- 2 Bankfield Avenue
- 3 Bridge Close
- 4 Thornton Drive
- 5 Wisterdale Close
- 6 Rope Bank Avenue
- 7 Salander Crescent
- 8 Edgewood Drive
- 9 Woodbank Close
- 10 Laidon Avenue
- 11 Ledbury Drive
- 12 Haddon Close
- 13 Whirlow Road
- 14 Brecon Way
- 15 Lochleven Road
- 16 Glaisdale Close
- 17 Sunart Close
- 18 Rimsdale Close
- 19 Farndale Close
- 20 Beehcroft Avenue
- 21 Cedar Way

- 22 Ashville Court
- 23 Pinewood Court
- 24 Oakhurst Drive
- 25 Acorn Bank Close
- 26 Foxglove Close
- 27 Fuller Drive
- 28 Wellcroft Close
- 29 Willows Close
- 30 Crestwood Close
- 31 Chalfield Close
- 32 Barnwell Close
- 33 Dunham Crescent
- 34 Brackenwood Close
- 35 Crofters Close
- 36 Dovecote Close
- 37 Fourseasons Close
- 38 Hanbury Close
- 39 Gresty Lane
- 40 Eastern Road
- 41 No name

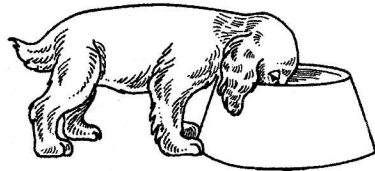


## REMINDERS TO THE OTHER FELLOW

Good citizens try:

- Not to park on grass verges
- Not to park on, or obstruct, pavements
- Not to let garden shrubs and trees obstruct pavements
- Not to drop and leave litter

## DOG OWNER'S CODE



MAKE SURE that:

- Your dog has enough food and water
  - Your dog gets enough exercise and company
    - Your dog is healthy
  - Your dog is under control at all times
  - Your dog is on a short lead near livestock
    - You clean up after your dog
  - Make sure your dog does not bark and cause a nuisance
- and REMEMBER that*
- Dogs worrying livestock may be shot